



MASSACHUSETTS
GENERAL HOSPITAL

RESEARCH INSTITUTE

Strategic Alliance Initiative

Gabriela Apiou, PhD, Brad Bernstein, MD, PhD

**MGH Research Council
February 1st, 2016**

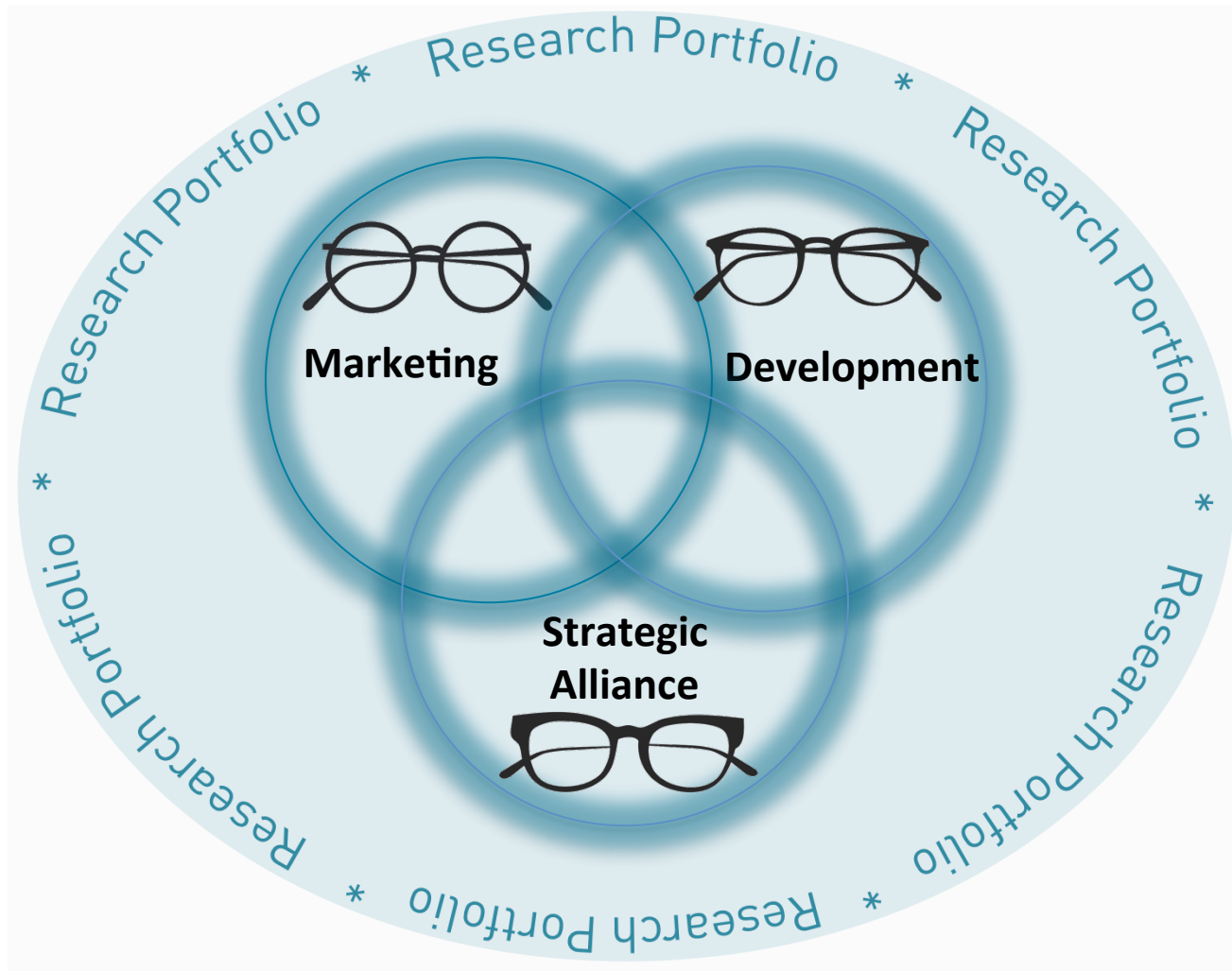


MASSACHUSETTS
GENERAL HOSPITAL

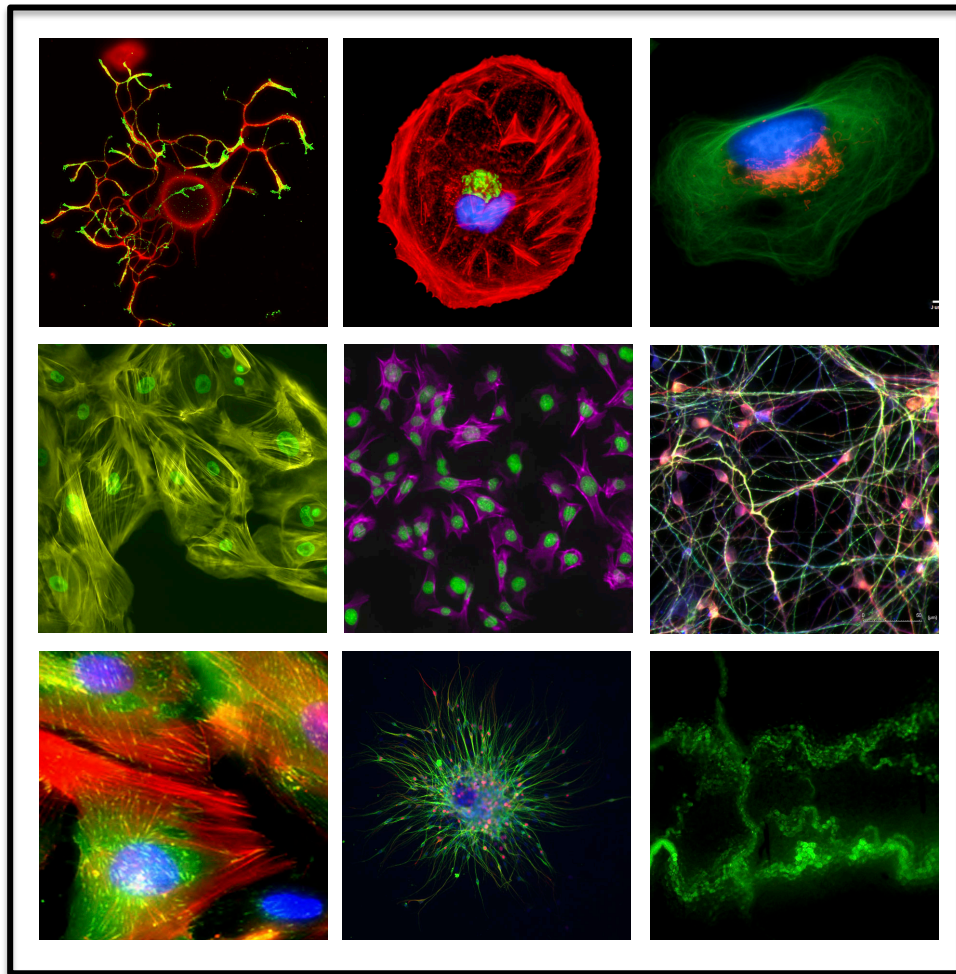
RESEARCH INSTITUTE



Promote Our Science



Portfolio Definition



*A collection of creative
works that can be shown
to potential customers
(general public, philanthropy, industry)*

A living document !

Portfolio Content

One paragraph pitch

- Containing the essence of the clinical and/or scientific problem to solve

One page outline

- Non-confidential
- Stating the problem and the need for a solution
- Describes the key specific aims (1 to 3) and their significance
- Includes one figure

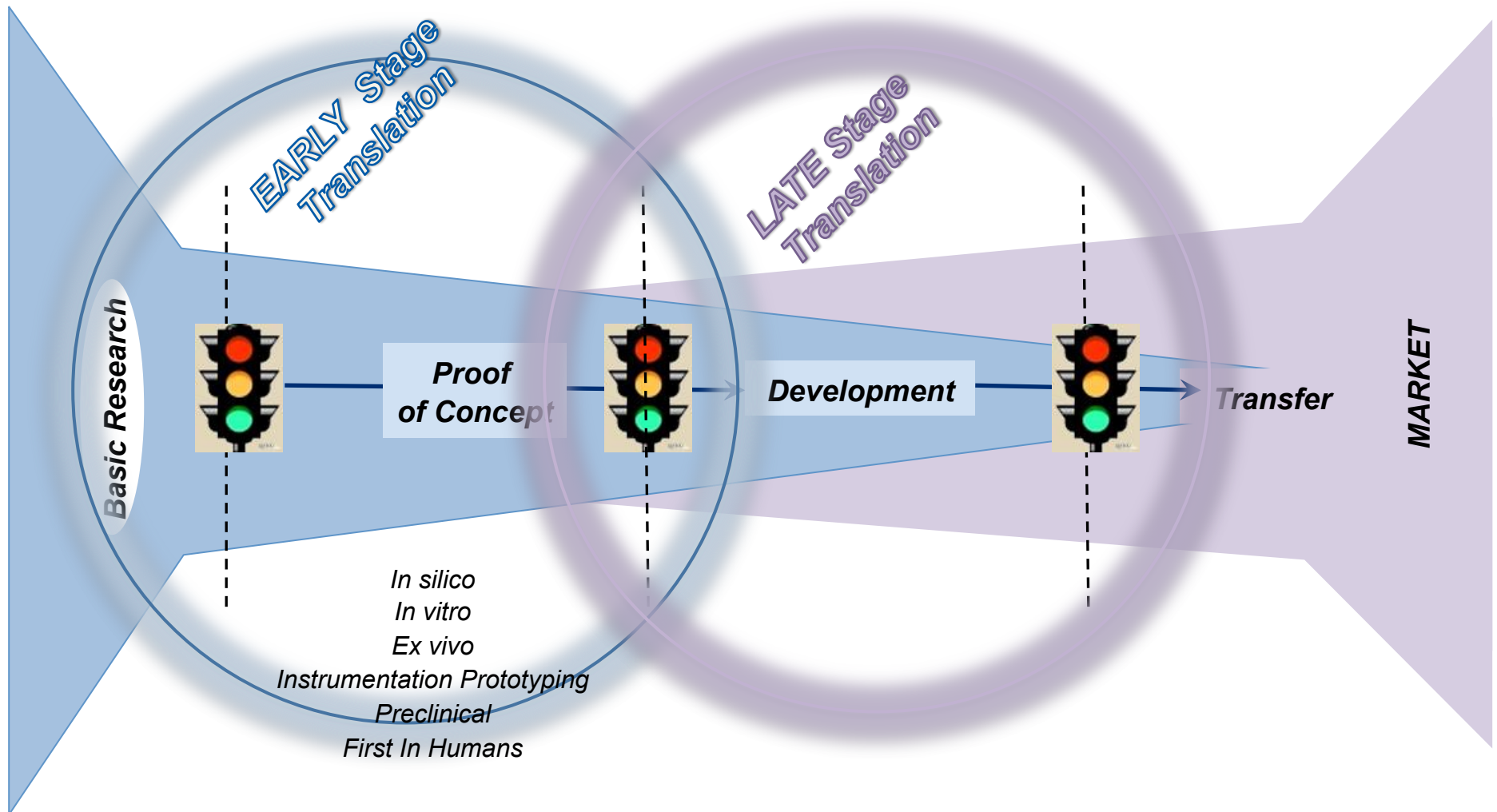
From Each Lab at MGH !

| Strategic Alliance Research Portfolio Non-confidential executive summary | |
|--|--------------------------|
| Mass General Department: Research Theme Title: Investigator Name(s): | Date: |
| Problem to be solved and need for solution (1500 character limit) | Insert figure (required) |
| <p>125 Nashua Street, Boston, MA 02114 • 617-726-1700 • research@rics.mgh.harvard.edu</p> <p>MGH055A.G. Apr 05 10:05</p> | |

Portfolio Development: Goal

- **Build common understanding of the ongoing research at MGH**
 - Comprehensive scientific foundation
- **Give our investigators visibility**
 - Internal:
 - MGH leadership
 - MGH Development Office
 - Partners HealthCare Innovation
 - Each other
 - External:
 - Commercial partners
 - Academic research institutions
 - Philanthropic sources
 - Foundations
 - General public

Portfolio Development: Concept



Strategic Alliance: Mission

**Help scientists at Mass General
to
engage in more productive
collaborations with industry
at
ALL stages of their work**

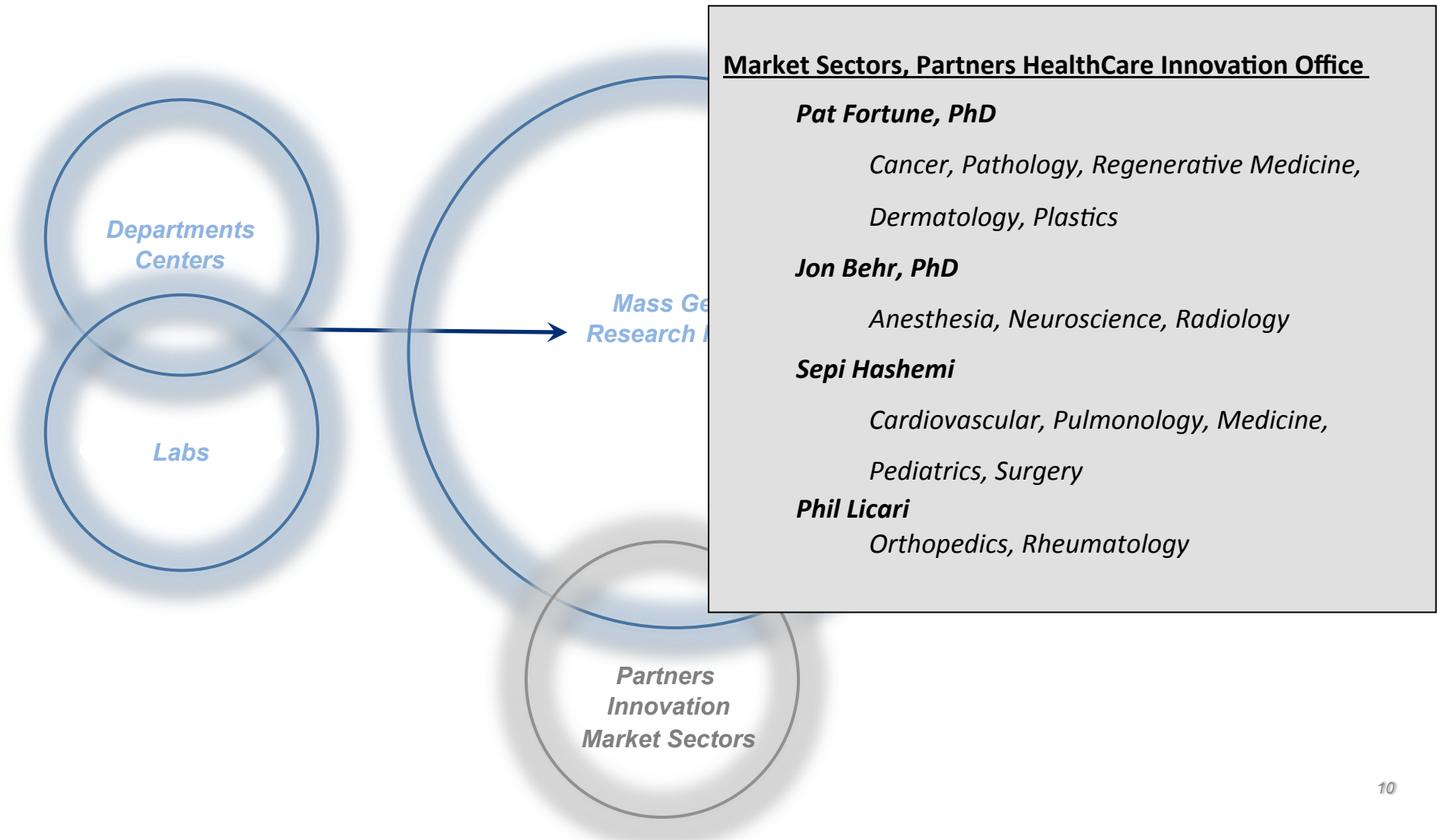
Strategic Alliance: Implementation Plan

- Portfolio Development



- Training Program
 - Enable **programmatic efforts** across departments and centers
- Grants Program
 - Establish a sound basis to:
 - Define **well informed strategies** and **tactics** for translational push
 - **Assess potential collaborations** with industry

Portfolio Development: Process



Portfolio Development: Process

*RIAC
Strategic Alliance*

*Departments
Centers*

Labs

*Mass Ge
Research I*

Strategic Alliance Committee, Outside Members

Jean-François Formela, MD, Atlas Venture

Robert I. Tepper, MD, Third Rock Ventures

Rajiv Kaul, Fidelity Investments

Deborah Dunsire, MD, Forum Pharmaceuticals

Ansbert Gadicke, MD, MPM Capital

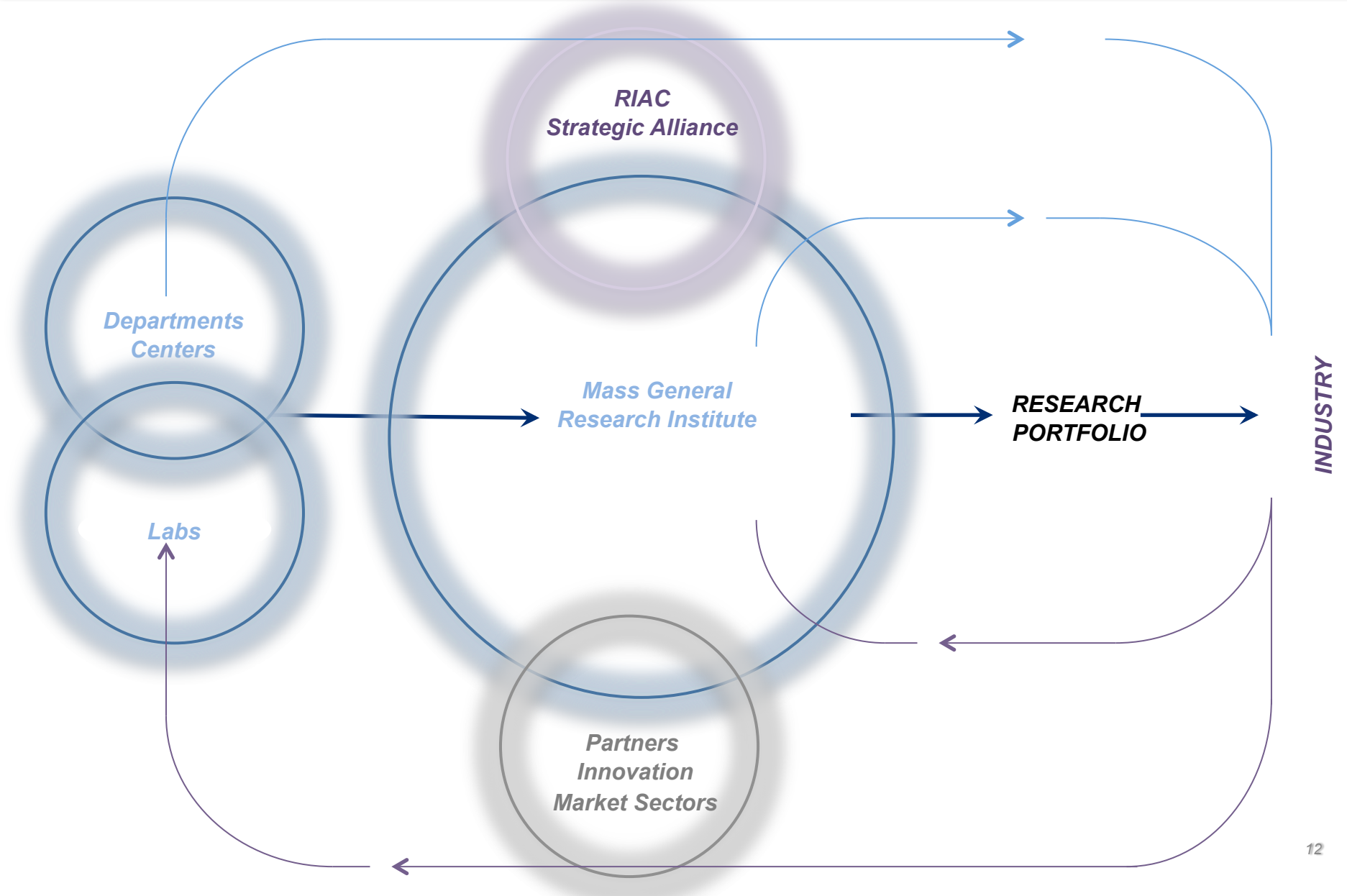
Michael Rosenblatt, MD, Merck

George A. Scangos, PhD, Biogen

Mason Tenaglia, IMS Health

*Partners
Innovation
Market Sectors*

Portfolio Development: Process



Planning for Translation: The TEAM Approach



Research Plan:

MGH Investigators, MGH Research Institute, Partners HealthCare Innovation, *RIAC-SA*

Business Plan:

MGH Investigators, MGH Research Institute, Partners HealthCare Innovation, *RIAC-SA*

Translation Plan:

MGH Investigators, MGH Research Institute, Partners HealthCare Innovation, *RIAC-SA*

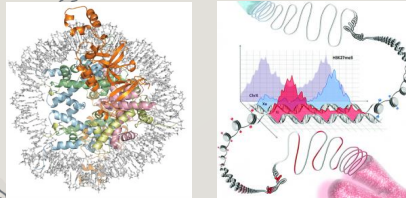
Portfolio Development: Status

Since Oct 2015

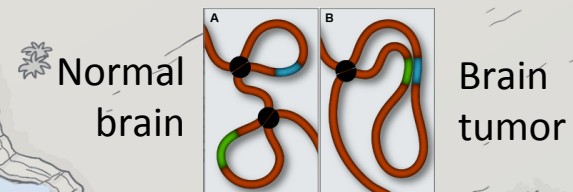
- 21 Departments and 7 Research Centers provided 71 “themes”
 - Aiming to solve major clinical and/or scientific problems
 - And this is only the beginning...
- The Research Institute is working with the investigative groups
- Research themes are being reviewed by RIAC Strategic Alliance Committee
- The launch:
Epigenetics & Cancer Immunotherapy Programs reviewed Dec 10, 2015
 - 9 themes and 27 investigators
 - 4 departments and 3 research centers

Epigenetics: Barriers & Grand Opportunities

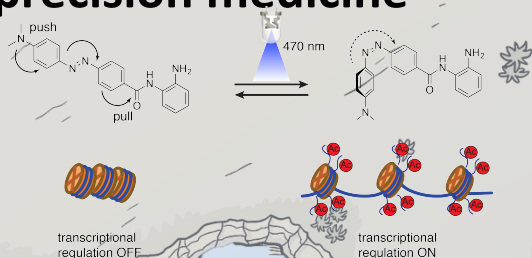
Epigenetic mechanisms



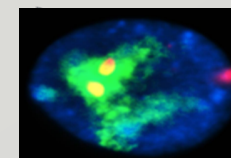
Molecular basis of disease



Epigenetic drugs & precision medicine

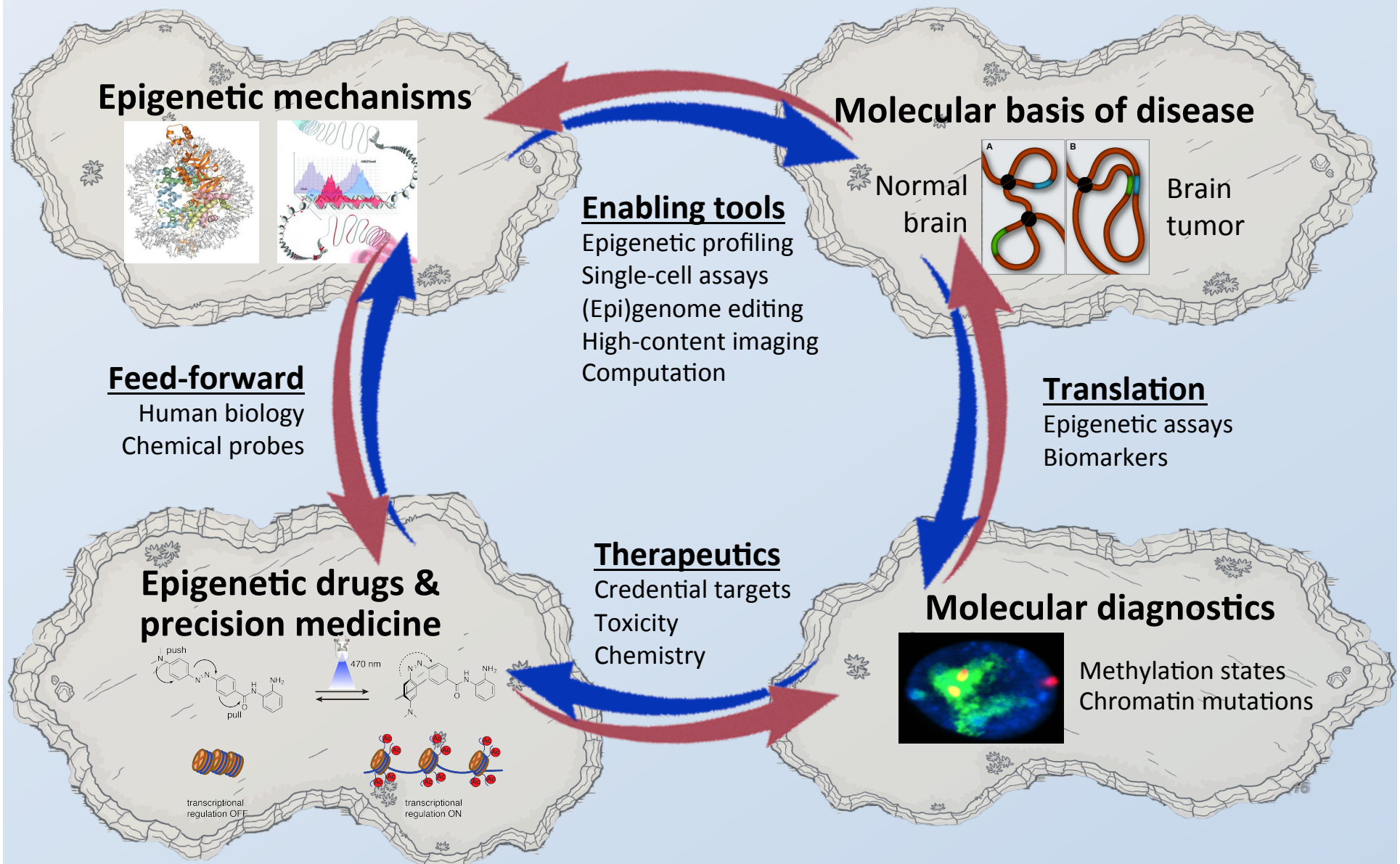


Molecular diagnostics

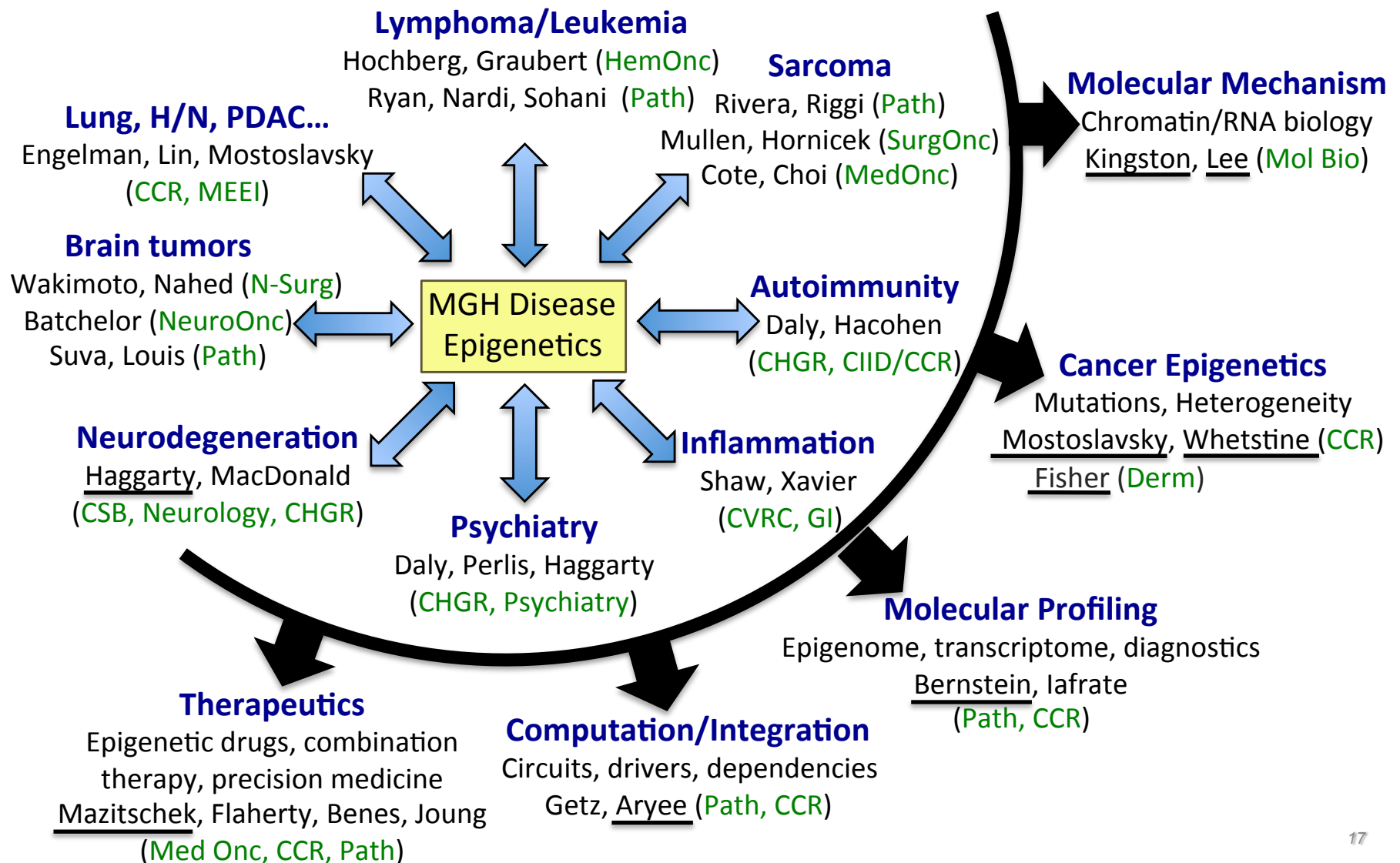


Methylation states
Chromatin mutations

Epigenetics Alliance: Bridging Islands



Epigenetics Alliance @MGHRI



Summary & Next Steps 2016

Help our scientists to engage in more productive collaborations with industry at ALL stages of their work

- Continue to build

- Develop and review
Alliance Commit

- Identify partners
for the reviewed

TEAM approach:

MGH Scientists
RIAC Strategic Alliance Committee
Partners HealthCare Innovation Office
Partners Office of General Council (OGC)
Partners Office for Interactions with Industry (OI)
MGH Development Office...

MASS GENERAL RESEARCH INSTITUTE !

We need YOU to build OUR Research Portfolio!

Complete your one page outline on
<http://mghresearch.partners.org/>

| Research Portfolio Non-confidential outline | |
|--|---------------------------------|
| Mass General Department: Research Theme Title: Investigator Names: | Date: |
| Problem to be solved and need for solution (500 character limit) | Insert figure (required) |
| Specific aims 1-3 (1000 character limit) | |
| Significance (1000 character limit) | |
| 125 Natchum Street, Boston, MA 02114 • 617-726-3795 • researchinstitute@mgh.harvard.edu | |



MASSACHUSETTS
GENERAL HOSPITAL

RESEARCH INSTITUTE

THANK YOU !

QUESTIONS ? SUGGESTIONS ?